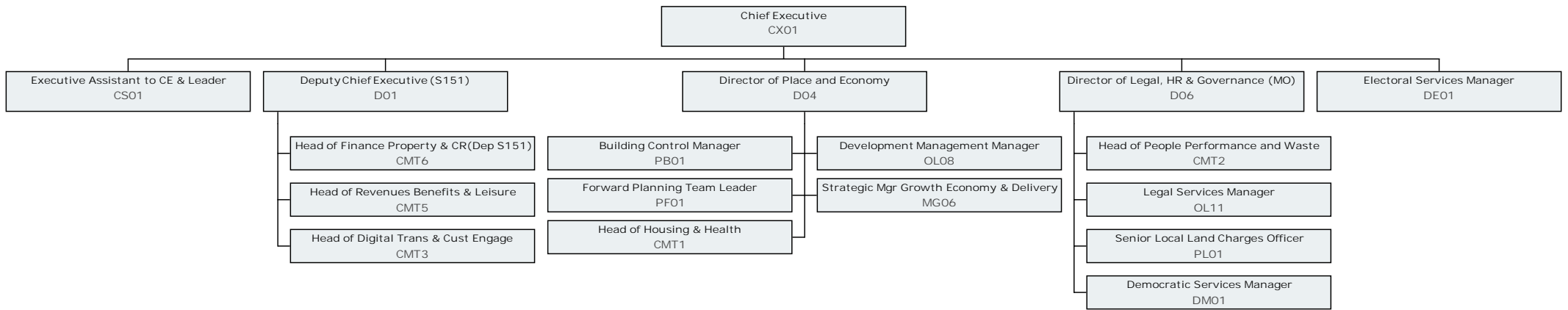
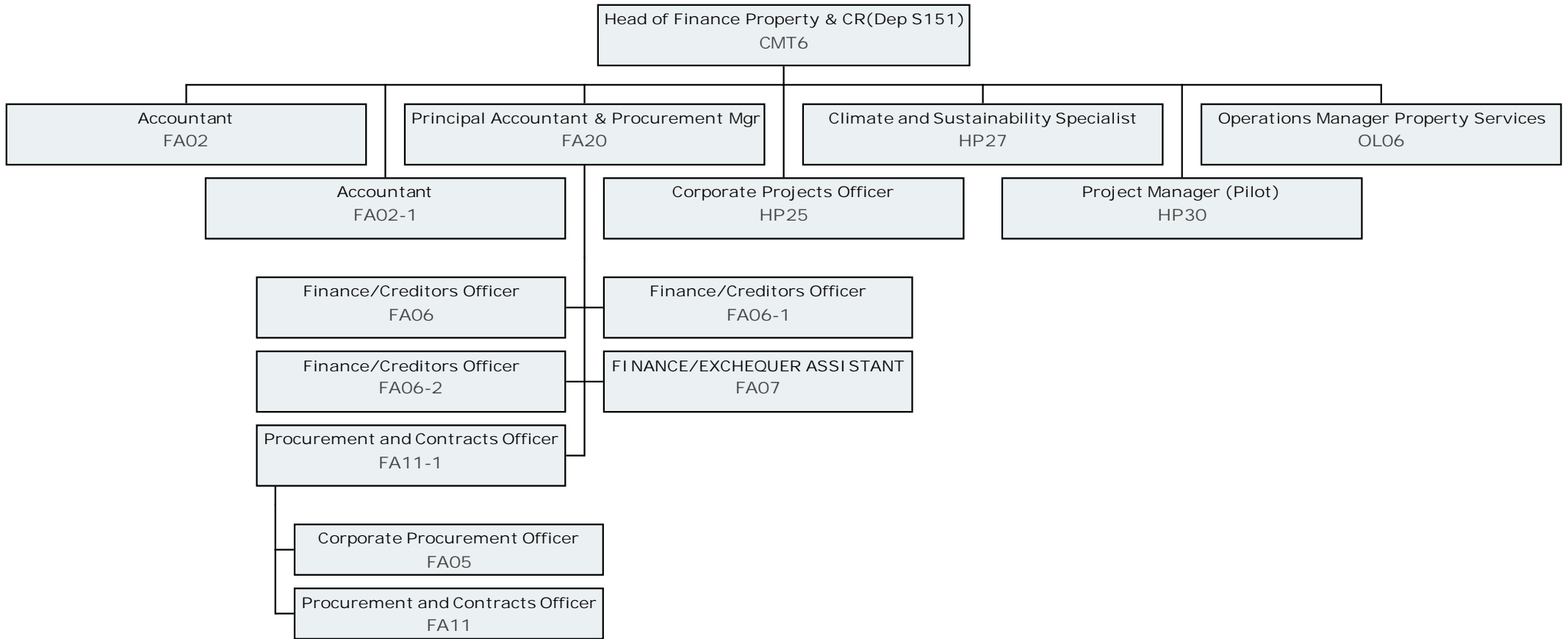
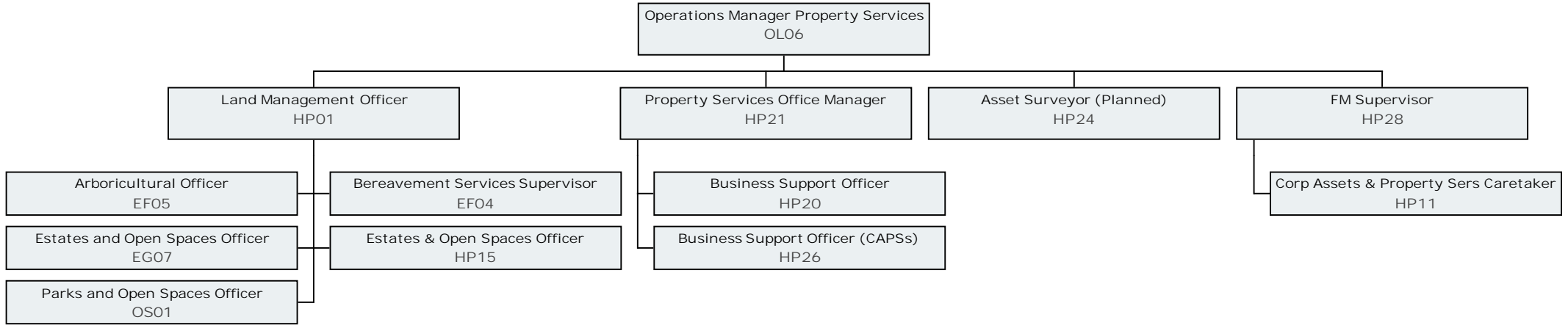


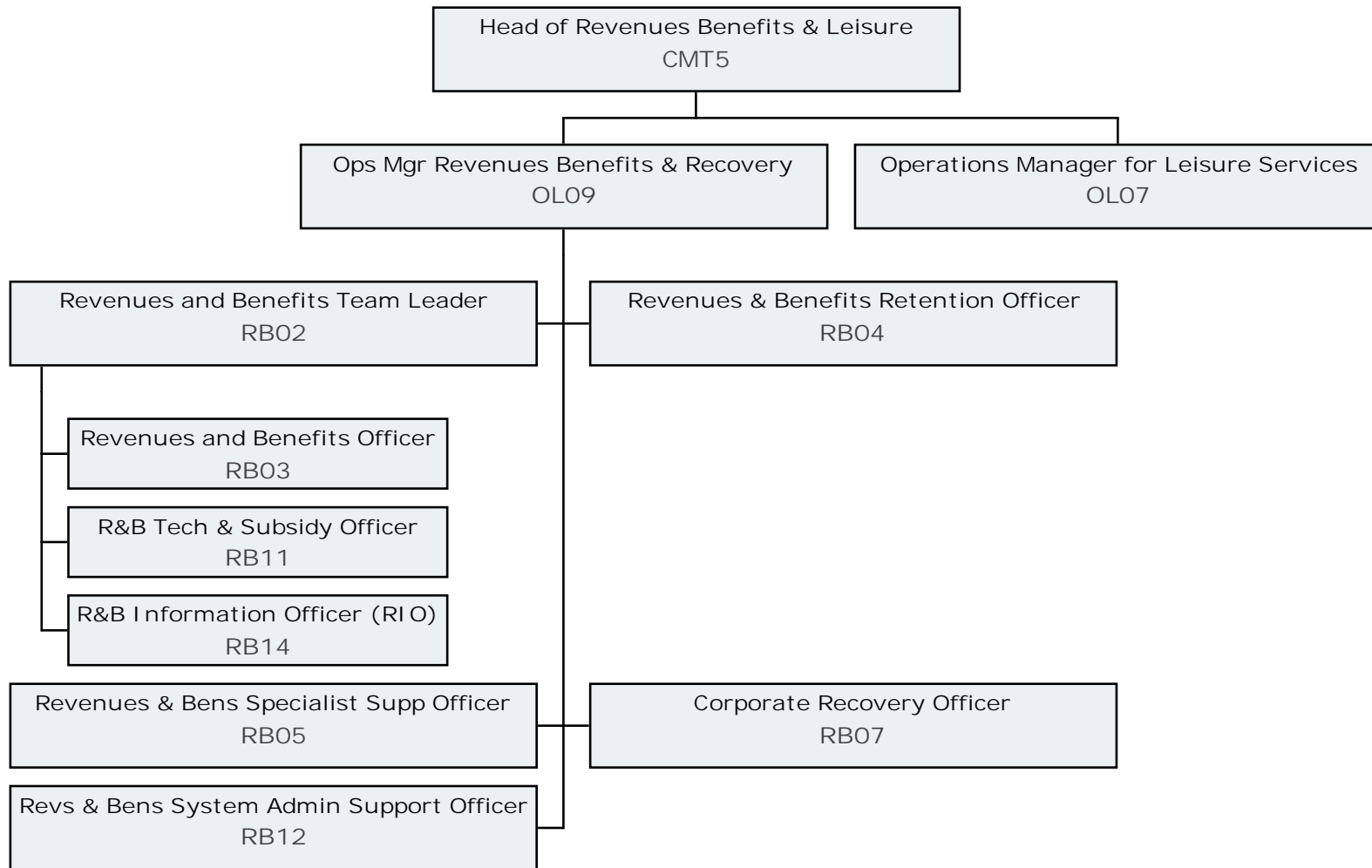
# Contents

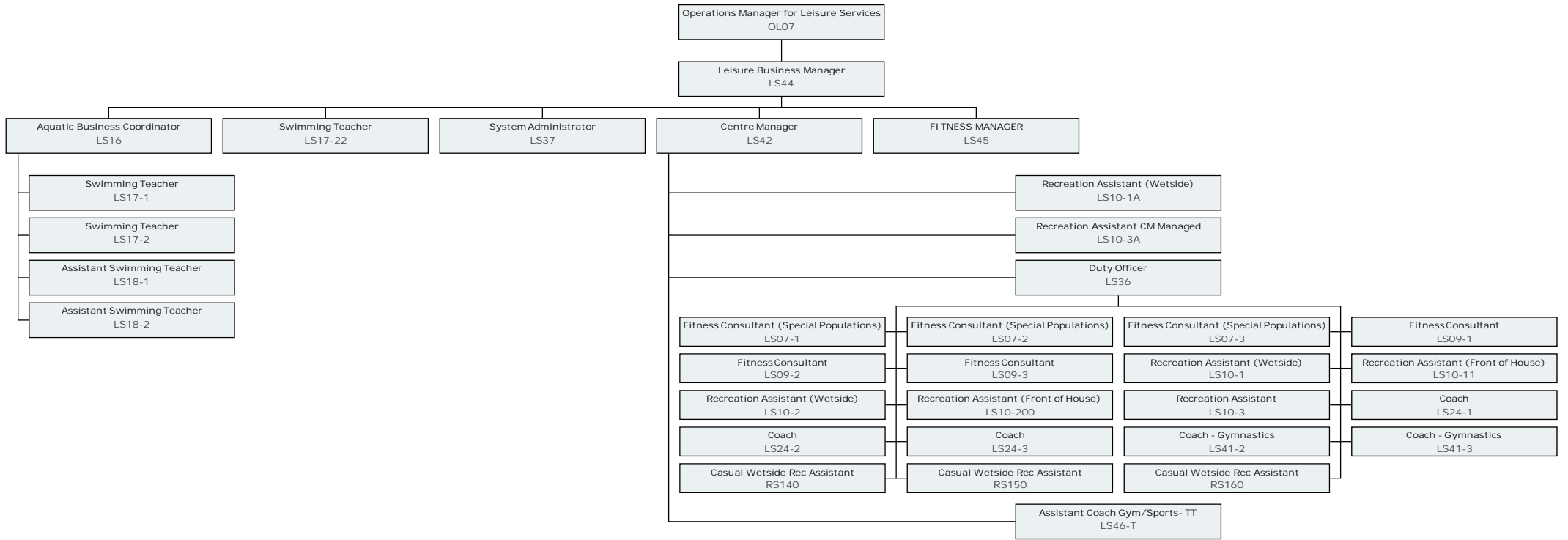
Contents.....	1
Chief Executive.....	2
Accounts and Procurement.....	3
Property Services.....	4
Benefits, Income & Recovery.....	5
Leisure Services.....	6
ICT & Digital Services.....	7
Building Control.....	8
Development Management.....	9
Forward Planning Conservation.....	10
Growth Economy & Development.....	11
Public Health & Housing Options.....	12
Housing Building Services.....	13
People Services.....	14
Street Scene & Open Spaces.....	15
Legal Services.....	16
Land Charges.....	17
Democratic Services.....	18
Electoral Services.....	19

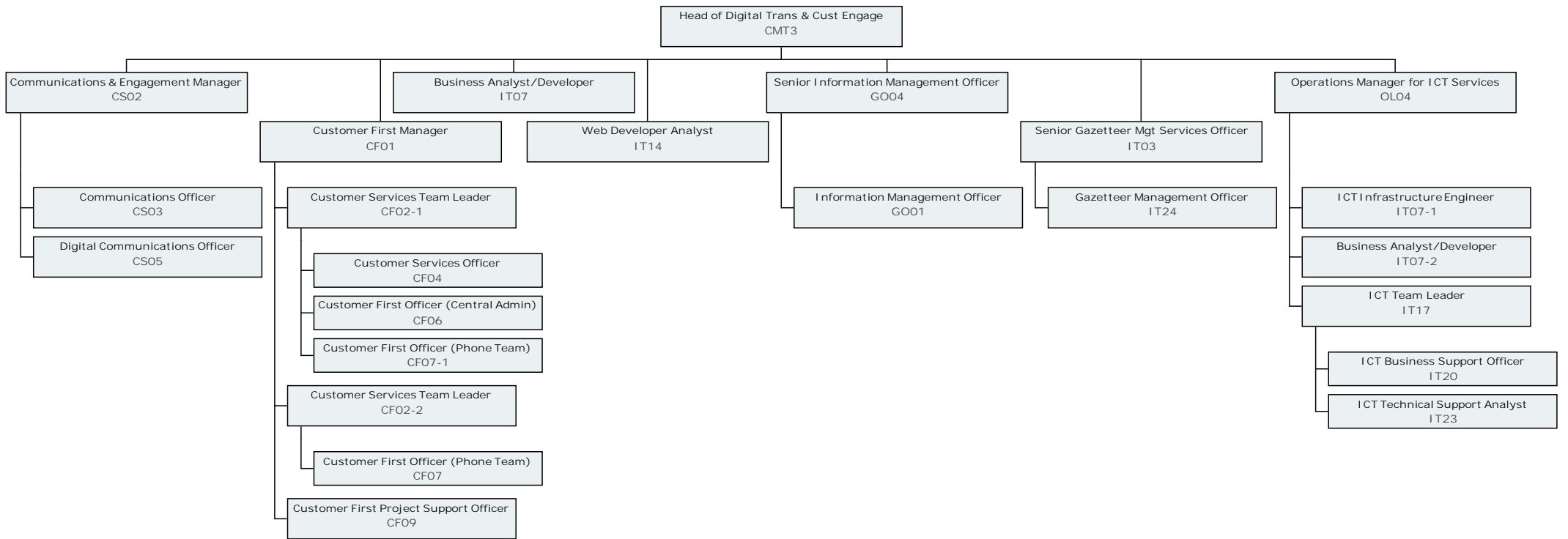


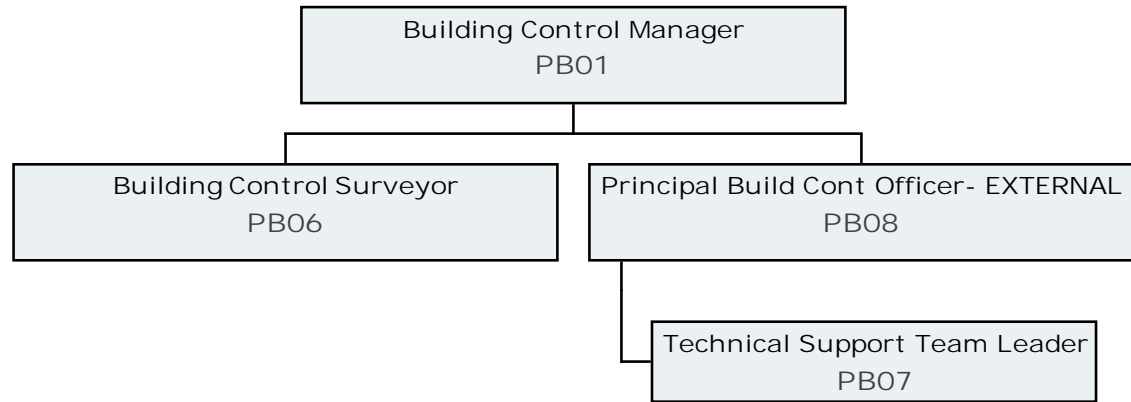




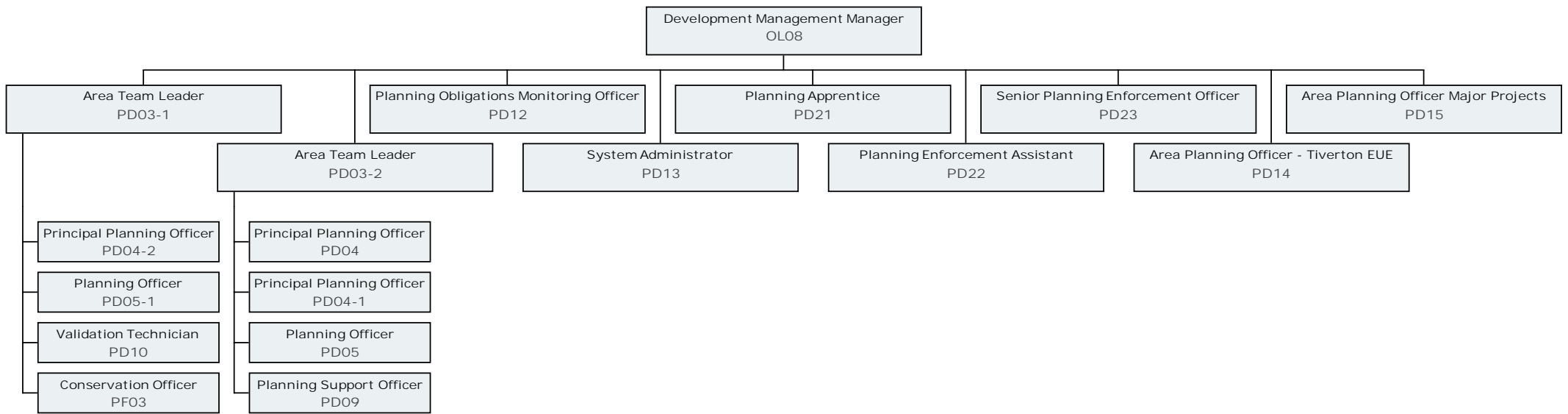


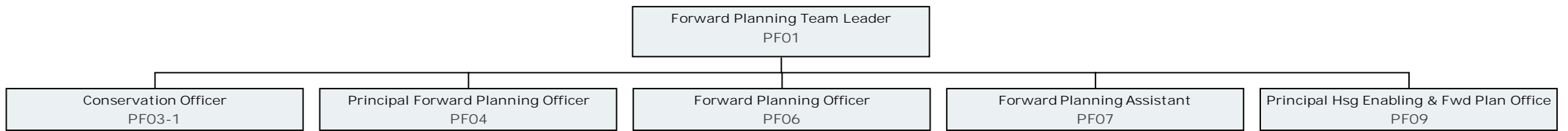


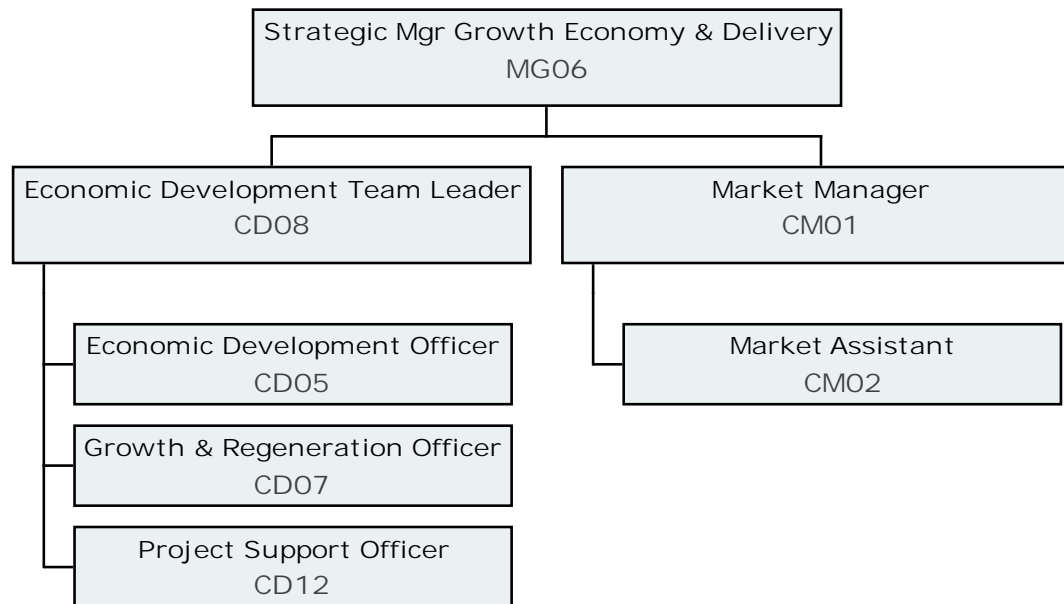


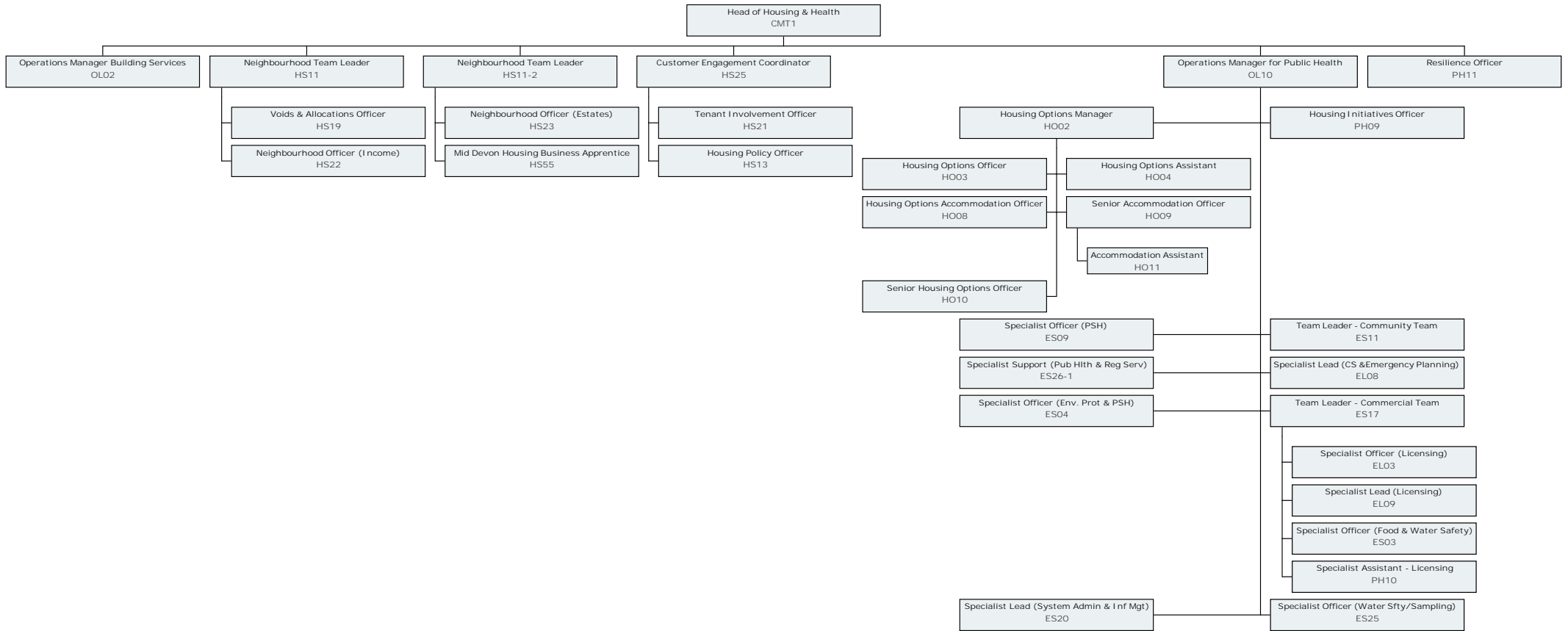


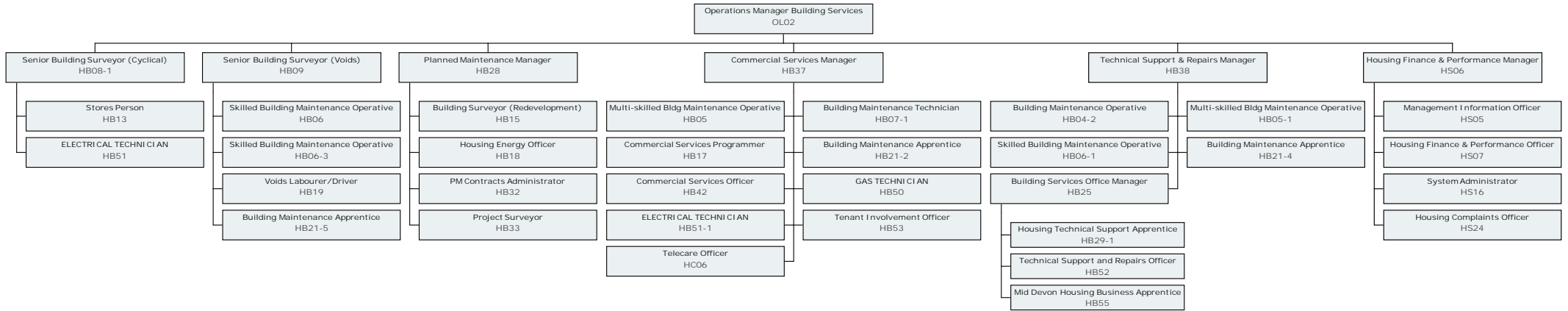


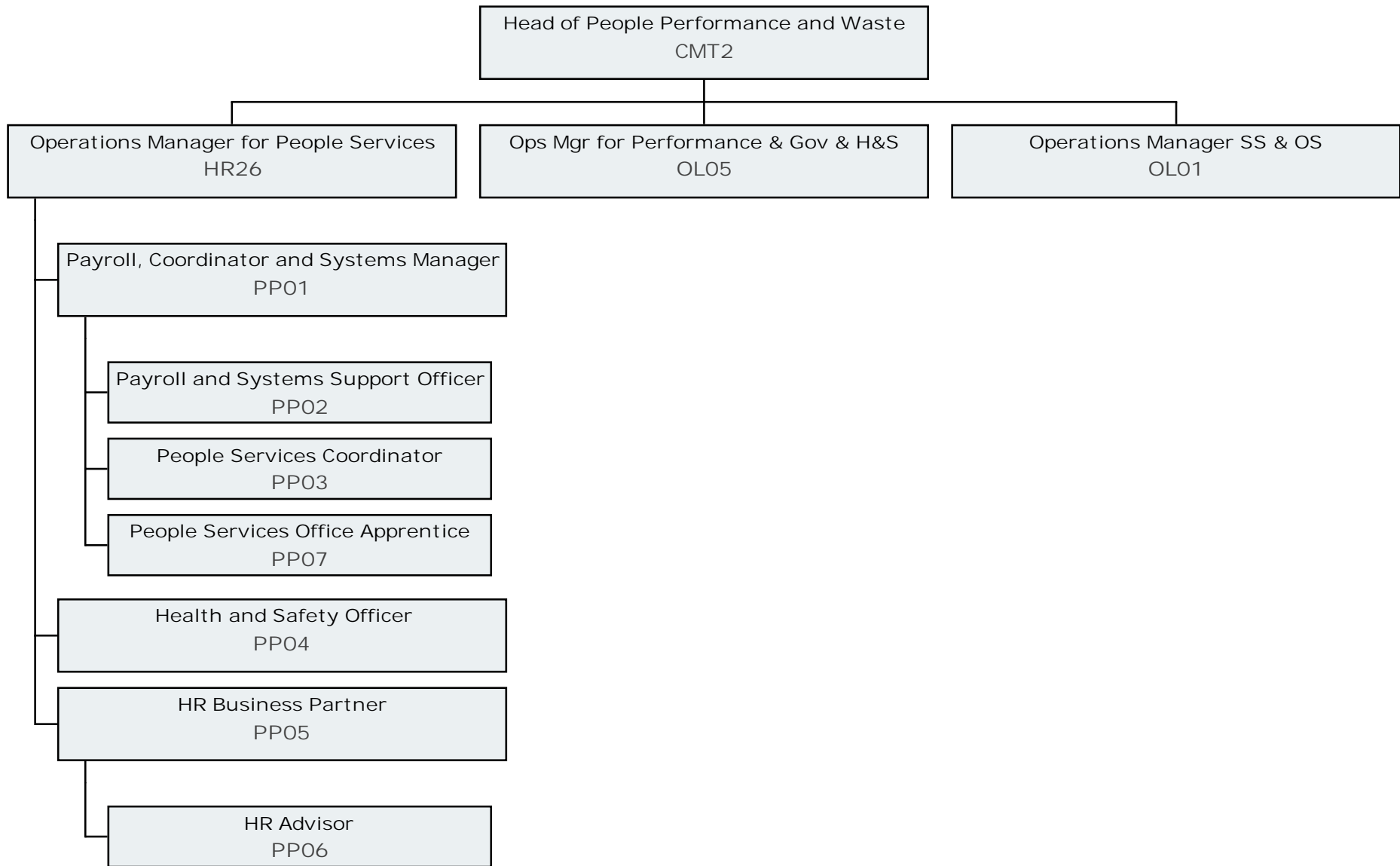


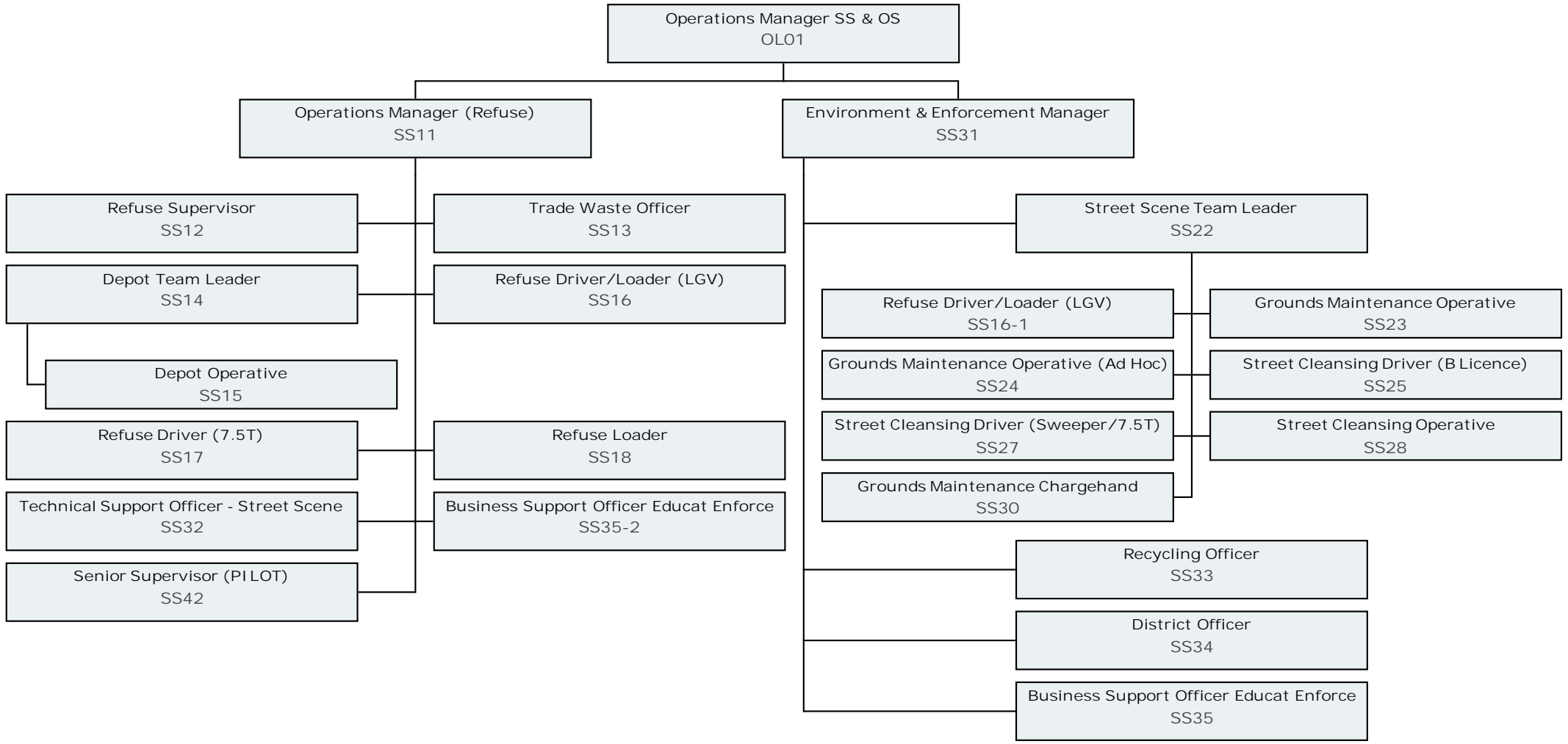


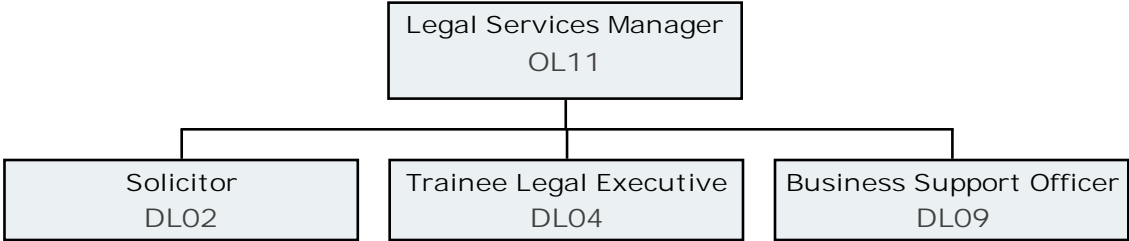










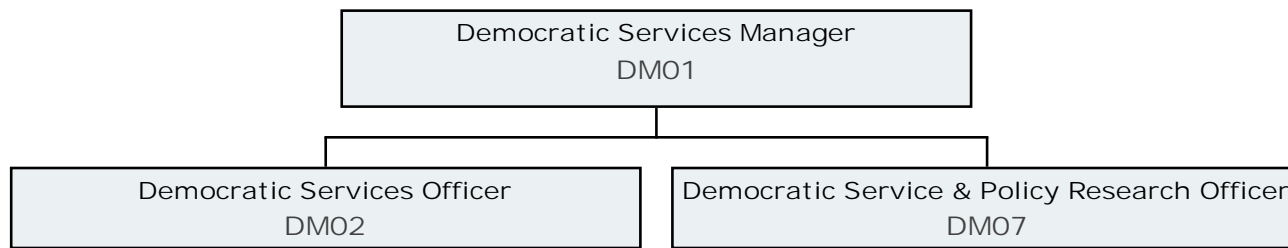




Senior Local Land Charges Officer  
PL01



Assistant Local Land Charges Officer  
PL02



Electoral Services Manager  
DE01

Electoral Services Assistant  
DE02

